

Mount View

CHURCH STREET • MALPAS
CHESHIRE

KINGFISHER

3/4-bedroom semi-detached family home



Beautifully designed homes



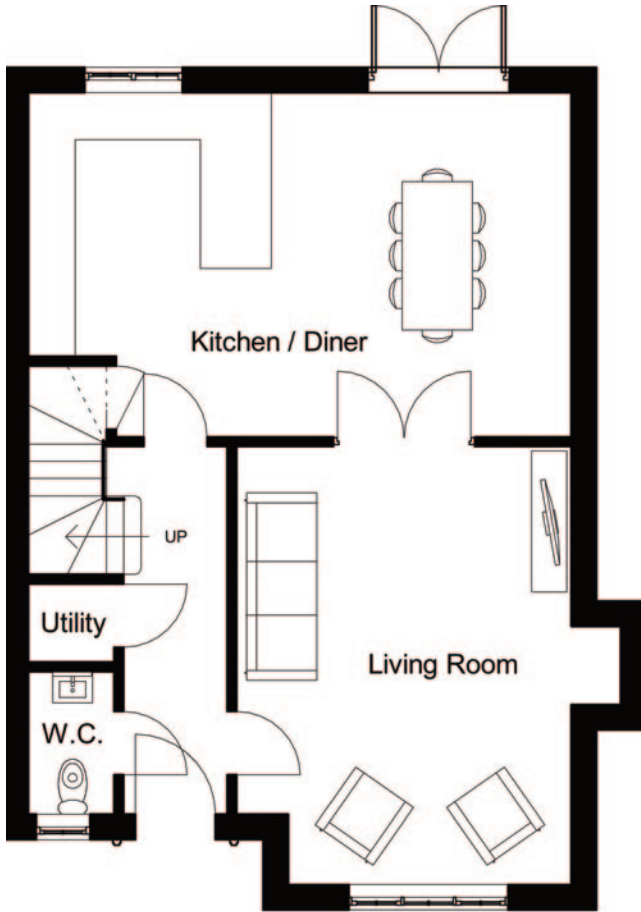
Orchard House Properties

info@ohpdl.co.uk

www.orchardhouseproperties.co.uk

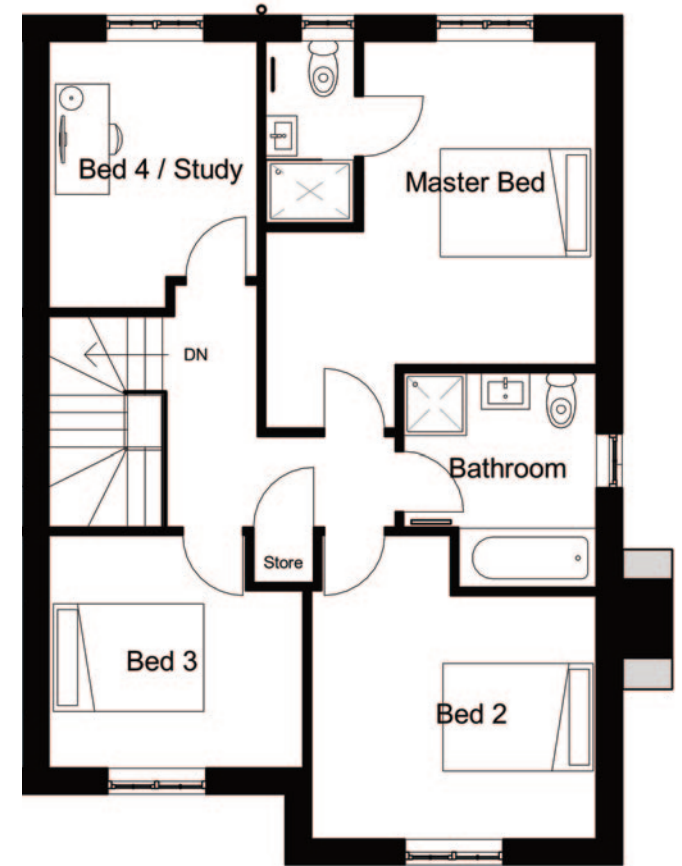
For sales enquiries call **01948 512 003**

KINGFISHER



GROUND FLOOR

Generously proportioned at 1,456 sq. ft, 'Kingfisher' features a large open plan Kitchen / Living / Dining Room, an en-suite Master bedroom, two further bedrooms and a separate study



FIRST FLOOR

GROUND FLOOR

Hallway	1.5 x 4.7 m	5'1 x 15'7 ft
Living Room	4.9 x 5.6 m	16'1 x 18'4 ft
Kitchen/Dining	6.9 x 4.4 m	22'10 x 14'6 ft
WC	1.1 x 1.8 m	3'7 x 6' ft

Large open-plan Kitchen / Living / Dining Room.
 Separate Living Room with fireplace for stove or open fire.
 Master Bedroom with en-suite bathroom. 1/F study.
 Drive with off-street car parking and private gardens.

FIRST FLOOR

Master Bedroom	4.2 x 4.9 m	13'9 x 16'1 ft
MB - En-suite	1.1 x 2.3 m	3'7 x 7'7 ft
Bed 2	3.6 x 3.8 m	11'12 x 12'5 ft
Bed 3	3.2 x 2.9 m	10'5 x 9'8 ft
Bed 4/Study	3.4 x 2.3 m	11'1 x 7'6 ft
Family Bathroom	2.3 x 2.6 m	7'9 x 8'7 ft
Landing	3.5 x 4.4 m	9'11 x 14'5 ft

Orchard House Properties,
 The Wyvern, Church Street, Malpas, Cheshire, SY14 8NU

01948 512 003
info@ohpdl.co.uk
www.orchardhouseproperties.co.uk